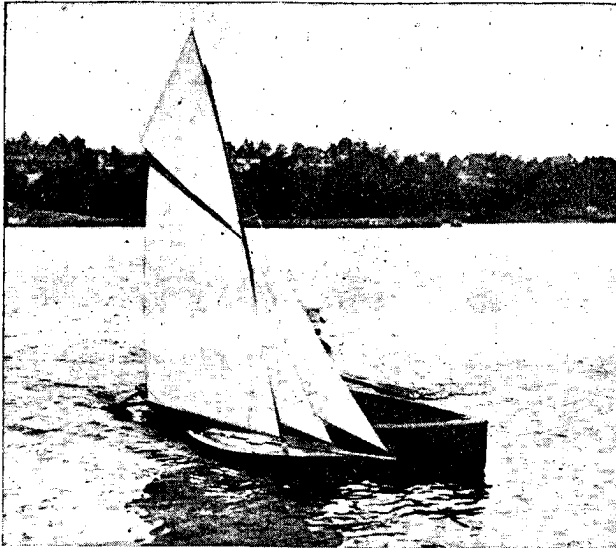


# YACHTING

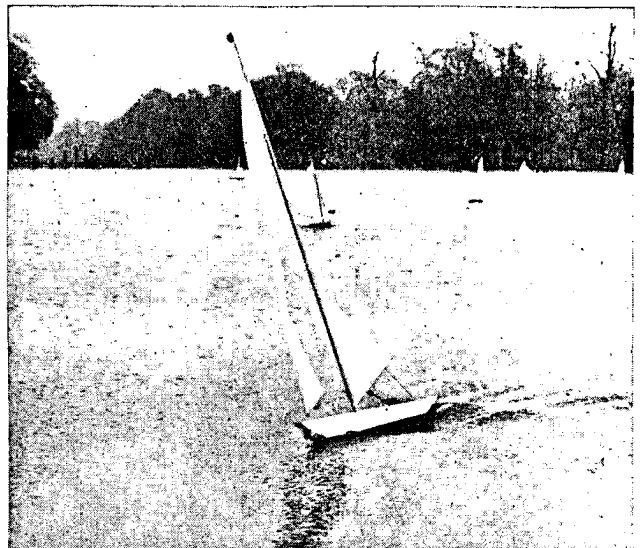
VOLUME XXXI  
NUMBER VI

JUNE, 1922

35 Cents a Copy  
\$4.00 a Year



*Polka Dot*, built and sailed by E. A. Bull, the representative of the Model Yacht Racing Association of America.



*Endeavor*, built and sailed by W. J. Daniels of London, the challenger of the international match.

## The Elimination Races for the International Model Cup

FLUSHING BAY, L. I., was the scene of the finest and most spirited series of races that has ever been held in this country, on May 13th, 14th, 20th and 21st when the six races to choose a defender to represent this country in the forthcoming International Model Yacht Race with Great Britain were sailed.

In this series ten new class "B" boats, the pick of the country, represented six model yacht clubs. Although all the boats were designed to the new model yacht rating rule, they varied considerably in type and, as results proved, in speed. Most of the boats conformed to the exact spirit of the rule and were beautifully modeled craft of normal displacement, although two or three of them carried their lead as an appendage fastened to a plate or short fin. Six of the boats had the Marconi rig and four of them had gaff-headed rigs with club topsail and double head rigs, the latter being the two boats representing the Prospect Park Model Yacht Club, one the Columbia Model Yacht Club and one the Irvington Model Yacht Club.

The races were sailed under ideal racing weather over courses that alternated windward and leeward and triangular, from 1½ to 2 miles in length.

The following are the boats, their

owners, and the clubs they represent:

*Polka Dot*, E. A. Bull, Prospect Park Model Yacht Club; *Fantasy*, J. A. Weaver, Central Park Model Yacht Club; *Audacious*, P. Pile, Columbia Model Yacht Club; *Ruth*, C. R. Daniels, Prospect Park Model Yacht Club; *Owisquot*, J. O. Berg, Central Park Model Yacht Club; *Flapper*, R. T. Johnson, Montclair Model Yacht Club; *Osprey*, E. F. Judd, Montclair Model Yacht Club; *Mousey Moon*, S. Jacob, Irvington Model Yacht Club; *Ted*, F. S. Franklin, Irvington Model Yacht Club; *Mother Cary's Chicken*, Wm. Atkin, Detroit Model Yacht Club.

The interest was high when the boats came to the line the first day to go over a leeward and windward course, and after a hard fight the *Polka Dot*, owned by E. A. Bull, won by the scant margin of 1 minute and 8 seconds over the *Fantasy*, owned by J. A. Weaver. The second race was triangular, two miles in length, and the same two boats fought it out for the first place, the winner turning up in *Fantasy*, which boat beat the *Polka Dot* by only 59 seconds.

The third race, also triangular, again went to the Central Park Boat, *Fantasy*, which beat the *Ruth*, owned by C. R. Daniels by only 39 seconds, *Polka Dot* being third.

The fourth race was sailed in a

very strong breeze in which a number of boats came to grief and were withdrawn, one of them, the *Flapper*, owned by R. T. Johnson, losing her mast when she hit the committee boat. The winner turned up in the *Ruth*, owned by C. R. Daniels, which beat the *Audacious*, owned by P. Pile, by 57 seconds. In this race the *Fantasy* was disqualified for turning a mark the wrong way.

The fifth and sixth races resulted in wins for the *Polka Dot*, owned by E. A. Bull, the first by a margin of 2 minutes and 41 seconds over the *Fantasy* and the second by 23 seconds over the *Ruth*, the *Fantasy* being third. In one of these races two of the boats, *Polka Dot* and *Ruth*, crossed the finish line exactly at the same time.

The results of the six races showed that the *Polka Dot* had won three events, the *Fantasy* two and the *Ruth* one. An analysis of the times of the five races in which the two leading boats finished, discarding the fourth race in which the *Fantasy* was disqualified, shows that on elapsed time in these races the *Polka Dot* took 3 hours, 25 minutes, 23 seconds, and *Fantasy*, 3 hours, 28 minutes, 05 seconds, a difference of 2 minutes and 44 seconds in favor of *Polka Dot*. The total time off the wind shows that the *Polka*

(Continued on Page 351)

justed that no rudder action is necessary when going to windward as close as she can lay her course with her sails all drawing. Such adjustment is known as balance, and it is the first and most necessary essential in producing speed.

The fixtures on the boom which are most convenient for sailing on a run-around pond, where poles are used to put the model about, are so arranged that upon reaching the windward bank of the lake the close-haul sheet may be cast off with the pole and the vessel put about and set off before the wind with least loss of time. They are shown in Fig. 6.

**The Elimination Races**

*(Continued from Page 321)*

*Dot* was 5 minutes, 15 seconds better, while on the wind the *Fantasy* was 1 minute and 34 seconds to the good.

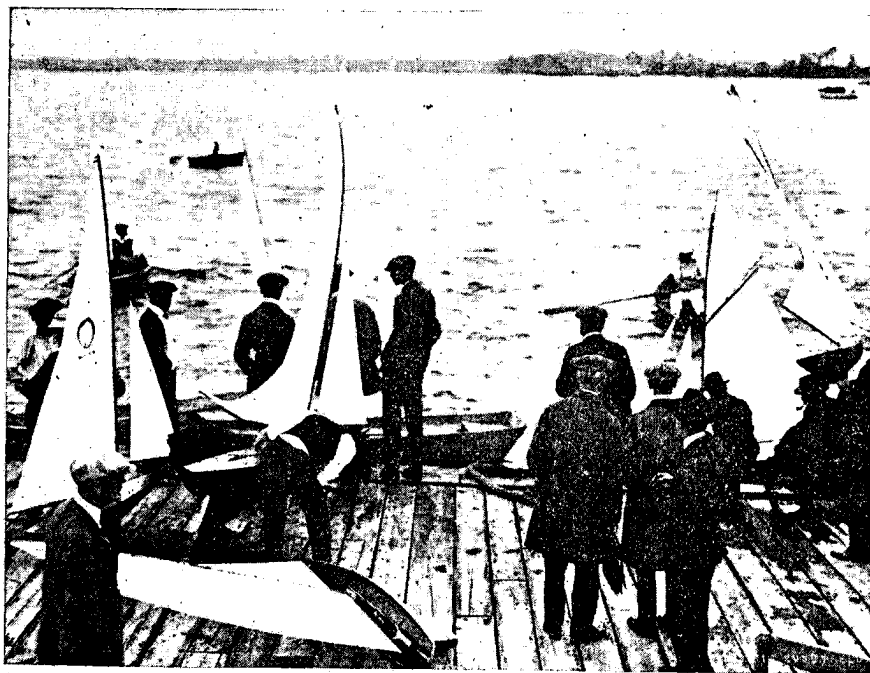
As many of the contestants were sailing boats of this size from row boats for the first time, those that had had experience in this kind of racing naturally had the advantage and some of the other boats which did not do so well will be very much better when properly tuned and in racing trim. This was impossible with the short time allowed after the completion of the boats and before the elimination commenced.

*Polka Dot*, owned by E. A. Bull, is the boat chosen to defend the cup by the committee which consists of James R. Craig, H. R. Robertson, R. W. Barton, Howard Griffith, and H. L. Stone.

**Light Sails**

*(Continued from Page 338)*

between them on into the headsails. Instead of steering a dead straight line it sometimes is an advantage to turn your yacht very, very little, but



The float of the Central Park Model Yacht Club on Flushing Bay was a busy scene on the days of the elimination races in which ten boats, representing six clubs, competed.



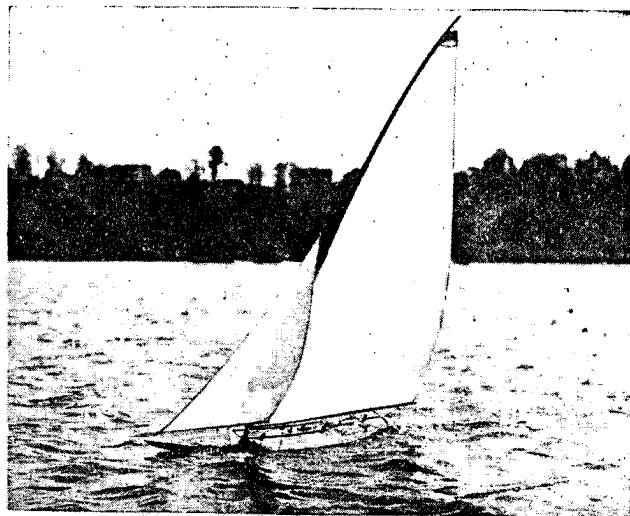
Cup presented by YACHTING for the International Model Yacht Race between America and England, June 8th, 9th and 10th.

just enough so that when the air is very light you edge her out into new air, and so create a slight change of air pressure on your sails and get a trifle more push against the canvas. Many skippers, appreciating the fact that there is least pressure on the sails when going dead before the wind, go off on a broad reach, jibe, and come back the other way. This is termed "tacking to leeward" and is the way ice yachts sail before the wind, only in their case it's necessary as they cannot square away the boom. Remember we are speaking of light airs and drifting weather tactics, now. When it blows up any kind of a decent breeze, funnel your sails and steer a bee line for your buoy.

If there is a sea or swell that slats your sails so they spill the wind put a lashing down to the deck on both main boom and spinnaker.



*Owisquot*, owned and sailed by J. O. Berg, did well in the series, but she was overpowered by the larger boats.



*Osprey*, owned by E. F. Judd of the Montclair Model Yacht Club, in the second race.